



PHOTO 9. 240 VULCAN STREET: View of Study Area C (Concrete Parking Lot) and Adjacent Factory Building, Facing West.



**PHOTO 10. 240 VULCAN STREET: Looking Toward Powertrain Storage Rack Area
Across Study Area C (Concrete Parking Lot), Facing North.**

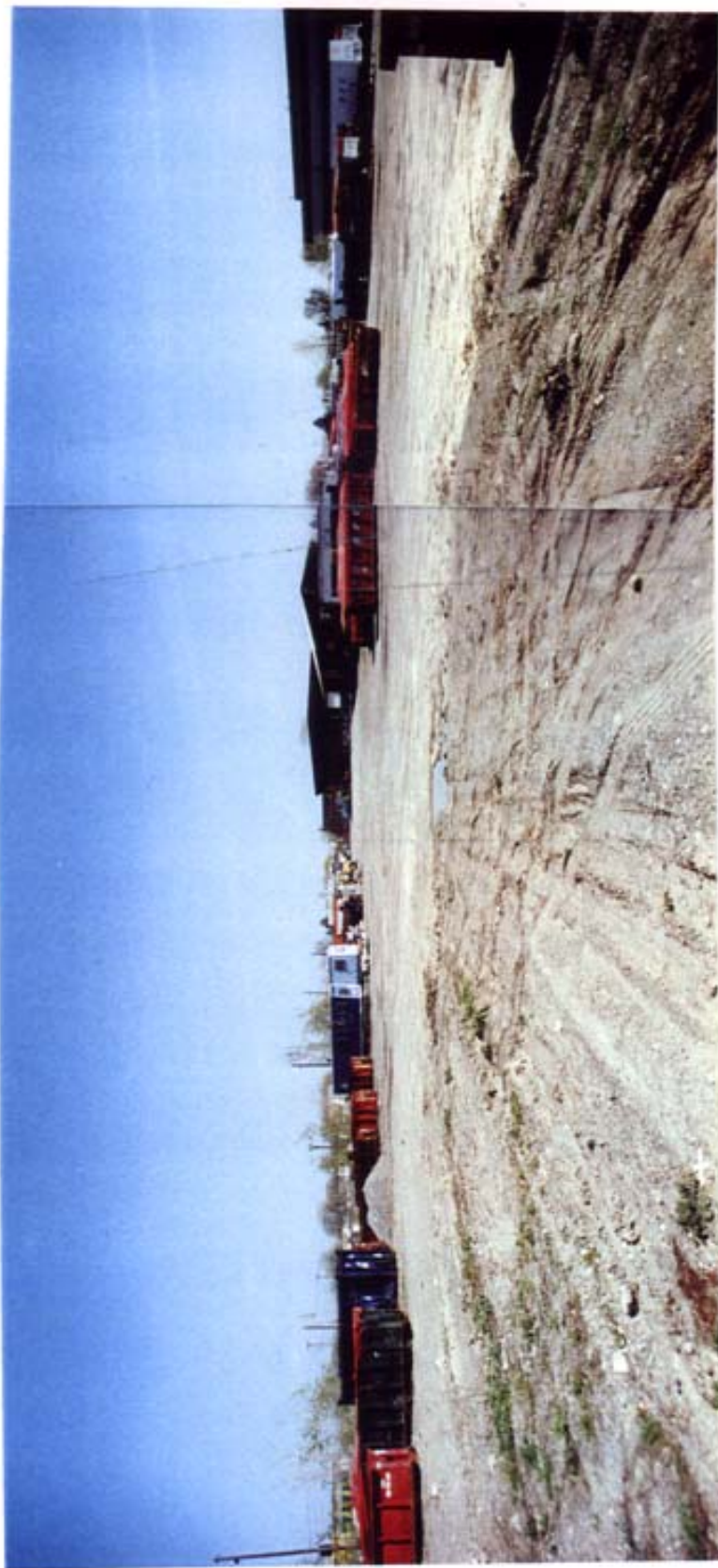


PHOTO 11. 344 VULCAN STREET: Location of Former Farrel Birmingham Building Showing Highly Disturbed Conditions, Facing South. (Note: Water-filled feature in foreground is Former Footing For Heavy Machinery.)



PHOTO 12. 344 VULCAN STREET: Highly Disturbed Location Along Vulcan Street, Facing Southeast.



PHOTO 13. 344 VULCAN STREET: Highly Disturbed Location Along West Boundary of Farrel Birmingham Parcel, Facing West.

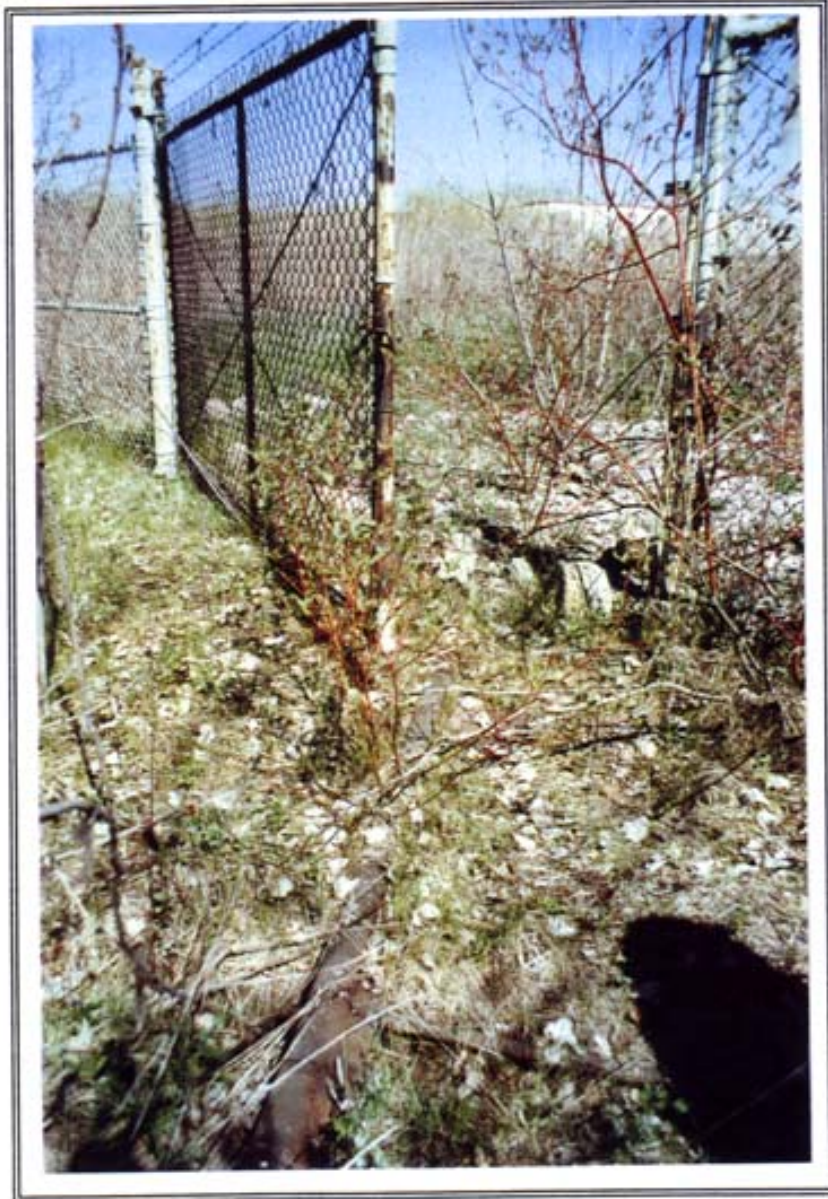


PHOTO 14. 344 VULCAN STREET: View of Former Railroad Spur Route, Facing Northwest.



PHOTO 15. 344 VULCAN STREET: Highly Disturbed location Near Former Railroad Spur Showing Mounded Soils, Barrels and Debris From Post-Fire Remediation at Farrel Birmingham Building, Facing Northeast.



PHOTO 16. 344 VULCAN STREET: Highly Disturbed Location North of Former Farrel Birmingham Building Showing Railroad Ties and Disturbed Soils, Facing North. Northeast.



PHOTO 17. 344 VULCAN STREET: View of Backdirt From Animal Burrow Showing High Degree of Fill.



PHOTO 18. 344 VULCAN STREET: View of Highly Disturbed Location Showing Protruding Metal Bars.



PHOTO 19. 240 VULCAN STREET: Study Area A Showing Close-Interval Shovel Testing Around Positive Shovel Test, Facing South.



PHOTO 20. 240 VULCAN STREET: Study Area C - View of Core Boring Through Concrete Slab (Core C-3).



PHOTO 21. 240 VULCAN STREET: Area A - View of Shovel Test Stratigraphy Showing High Degree of Filling and Native Clay Soils.